

Palmeira Square

Hove





We know just the place...



Placed within a beautiful Stucco fronted building, this two bedroom top floor apartment measures just under 1100 square feet with well-proportioned rooms and located on one of Hove's most prestigious addresses, Palmeira Square.

As you enter the apartment, stairs rise to the fourth floor where a large bright open hallway allows access to all rooms. To the front of the building is the reception room, which overlooks the well maintained communal gardens and there are views to the sea. Within this room, there is plenty of space for dining and entertaining. Bedroom two is also to the front, whilst bedroom one is to the rear, both being very similar in size and ideal for sharers.

Between the reception room and bedroom one is a large library, which could be converted into the ideal study space for anyone who is having to work at home. The kitchen is to the rear of the building with a range of wall-mounted and base units, with a beautifully presented bathroom and separate cloakroom next to it.

Palmeira Square is located between Church Road and Kingsway; it is known for its beautiful Grade II listed buildings. The communal gardens are well kept, with the seafront also just off Kingsway. Many amenities are available on Church Road, which continues onto Western Road, whilst Hove Station is not too far for access to London.



2



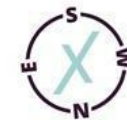
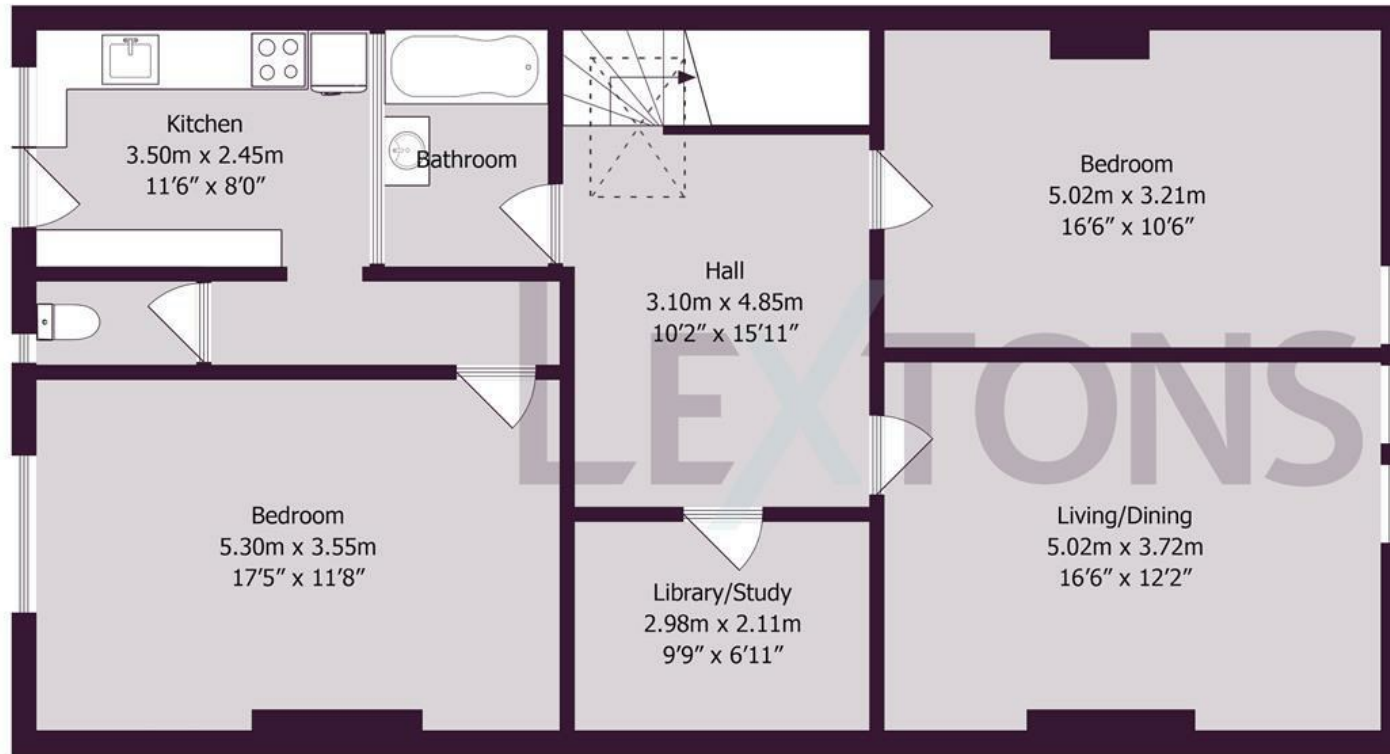
1



1



E



Approximate gross internal floor area 100.7 sq m/ 1084 sq ft

Whilst every care has been taken to ensure accuracy, dimensions are approximate and for illustrative purposes only.

Created by Property Photography UK for Lextons. All rights reserved.

Meet us here...
174 Church Road
Hove
BN3 2DJ

We aim to make our particulars both accurate and reliable. However they are not guaranteed; nor do they form part of an offer or contract. If you require clarification on any points then please contact us, especially if you're traveling some distance to view. Please note that appliances and heating systems have not been tested and therefore no warranties can be given as to their good working order.